

# Drinking Water Program Update



OELA / ORELAP  
Annual Meeting

Oregon  
Health  
Authority

Center for Health Protection  
Public Health Division  
May 2015

# Topics

- Regulatory update
- 2015 Legislature - fees
- Measures – how are we doing?

# Revised Total Coliform Rule - RTCR

- Final rule: 2/13/13, compliance date: 4/1/16
- MCL for E. coli only!
- No MCL for total coliforms, PWSs with TC presence must “find and fix” problems
- Rule applies to all 154,000 PWSs nationally
- EPA Quick Reference Guide available

# Revised Total Coliform Rule - RTCR

- Draft state rule presentation to Drinking Water Advisory Committee on 7/16/14, to EPA in August
- Adopt allowable monitoring reductions? Like TCR - no
- Final draft to DWAC in Jan. 2015
- State rule adoption during fall 2015, winter 2016
- State Primacy applications due to EPA 2/13/15, **Oregon and 35 other states extended to 4/1/16**
- EPA/states emphasis now is on preparing for implementation, guidance documents, data systems
- State information and outreach to prepare water suppliers well in advance of 4/1/16 effective date, stay tuned.....

# EPA Regulatory Actions (March 2015, AWWA)

Coming out in 2015	Coming out in 2016 or later
Draft Fourth Contaminant List (CCL4)	Proposed Long-Term Lead and Copper (LT-LCR) Revisions
Proposed 4 <sup>th</sup> Unregulated Contaminant Monitoring Rule (UCMR4)	Proposed Perchlorate Rule
Final recommended fluoride level for drinking water (from HHS)	Proposed Carcinogenic VOCs (cVOCs)
Second Round of LT2ESWTR monitoring	Third Six-Year Review of Existing Regulations: Microbials/DBPs
Something on storage tanks: cleaning and inspection?	Final CCL4
Health advisories for cyanotoxins	Final UCMR4
Guidance on Legionella treatment	Proposed Strontium Rule
Final Third Regulatory Determination: Strontium	Proposed Hexavalent Chromium Rule?
Report from NDWAC lead and copper working group	

# Immediate key initiatives

- Fluoride – HHS issued final recommended community fluoridation level of 0.7 mg/L - April 2015
- Algal toxins – EPA announced 10-day Health Advisory levels for children younger than school age: microcystin (0.3 ug/L) and cylindrospermopsin (0.7 ug/L) - May 2015
- Legionella – EPA workgroup on effective secondary treatment technologies. Draft guidance for states and facilities by end of 2015

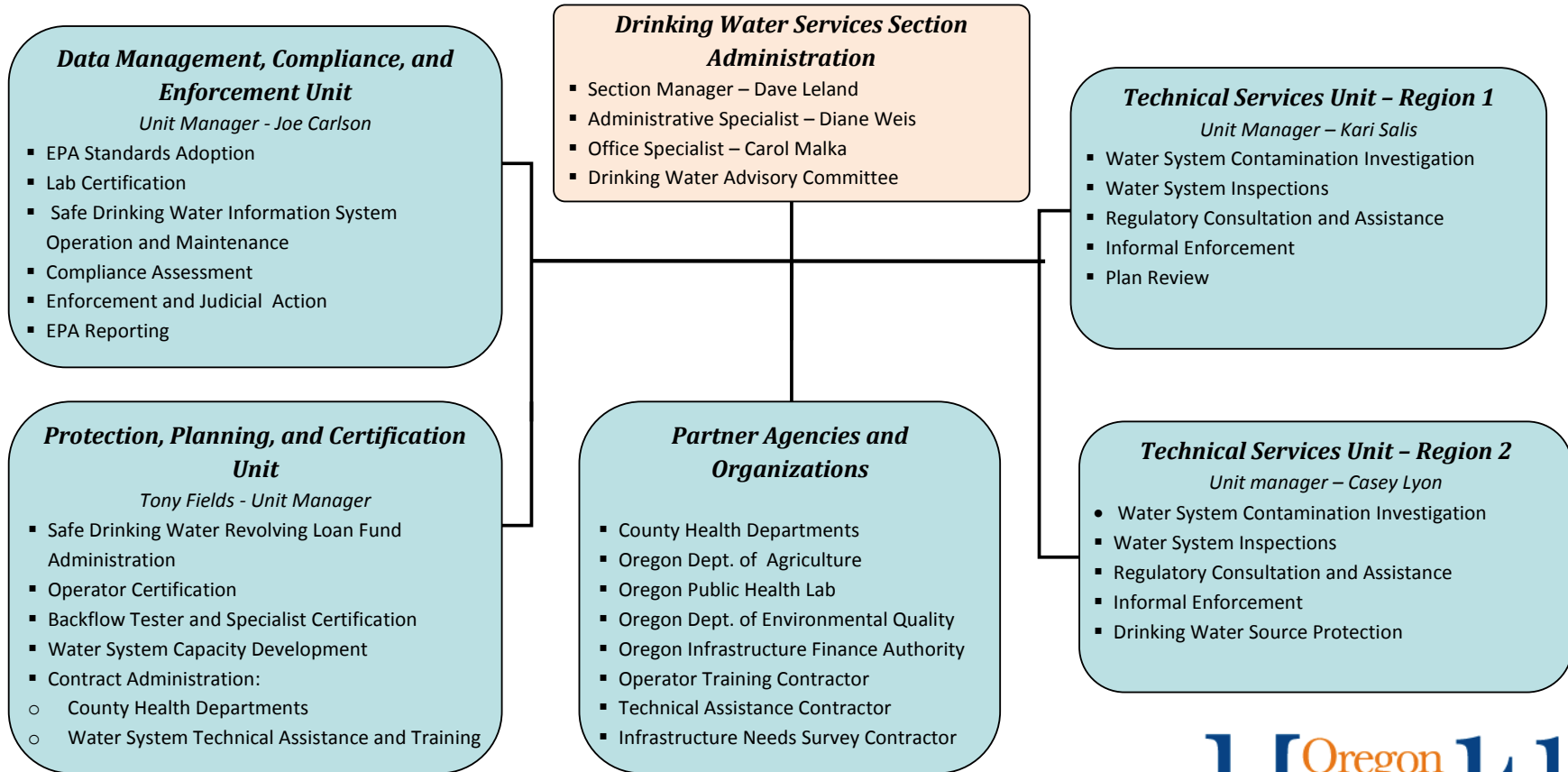
# 2015 Legislature



- **OHA-PHD 2015-17  
Governors  
Recommended Budget**
- PHD agency bills
- Public health  
modernization, HB 3100
- Other legislative bills  
(SB 121 – HHA)

**Drinking Water Services Section  
Center for Health Protection  
Public Health Division**

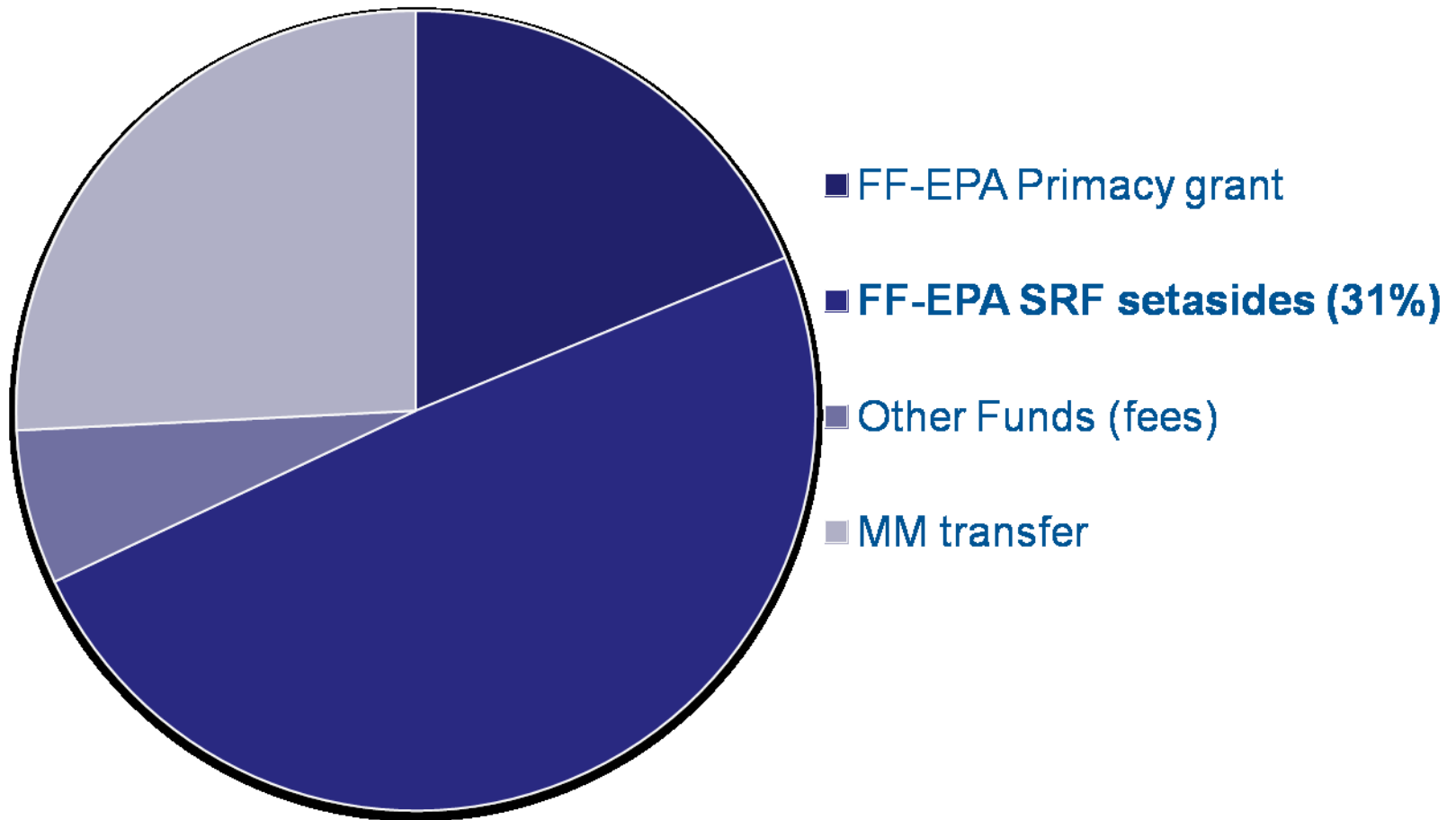
**We assure all Oregonians safe drinking water (ORS 448)**





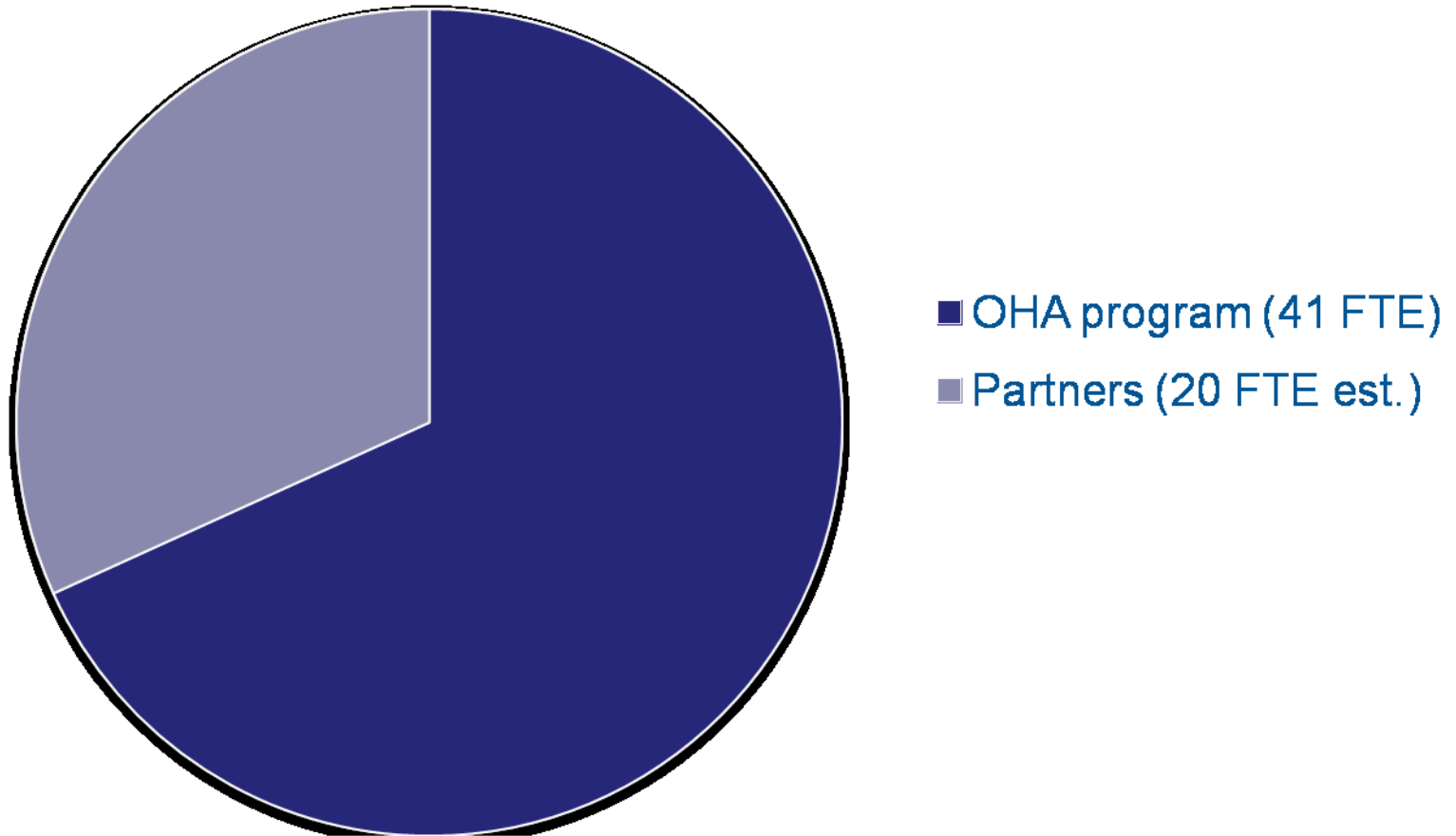
# 2013-15 DWS revenue (through Dec. 2014)

**2/3 is federal funds (no general funds)**

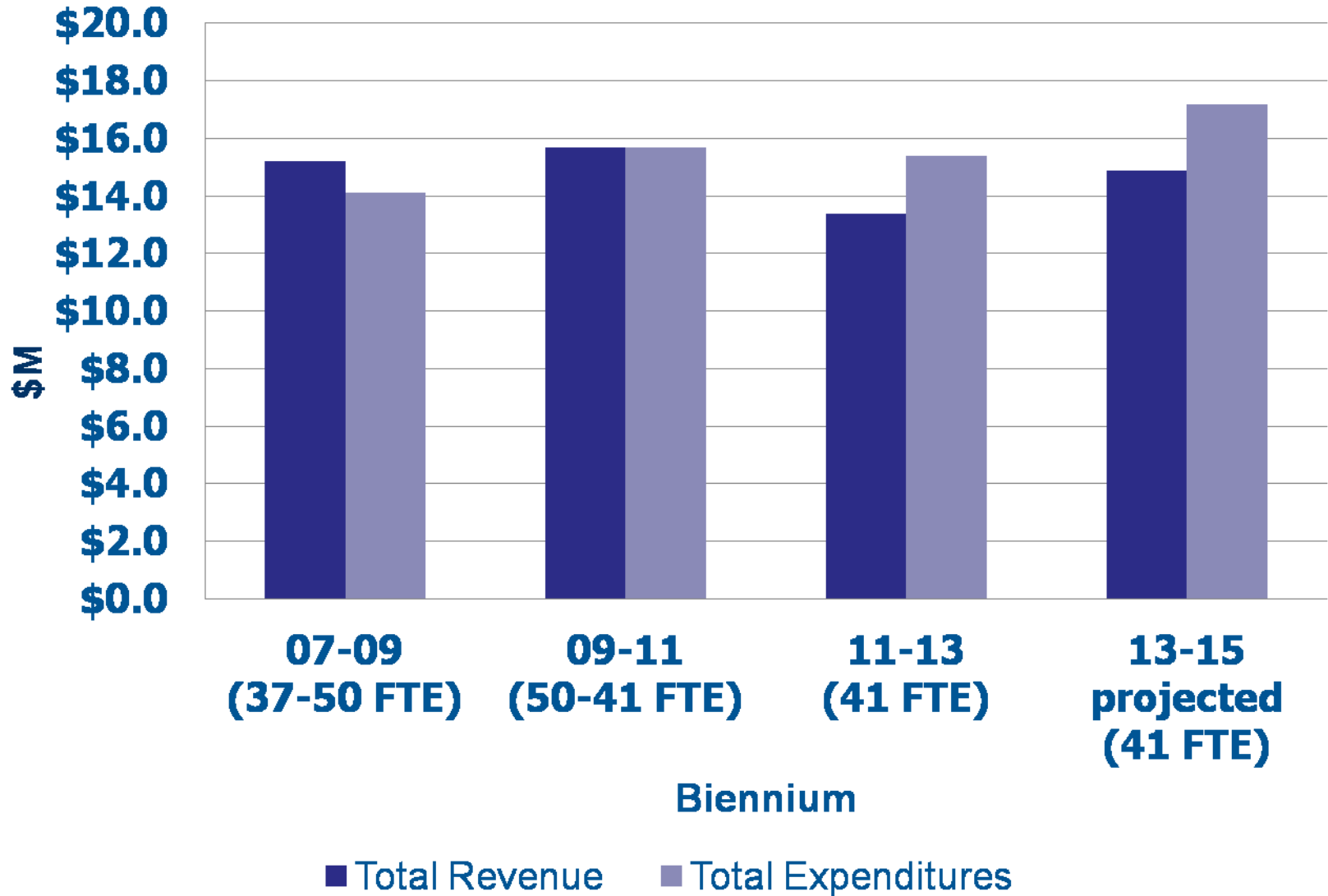


# 2013-15 DWS expenditures (through Dec. 2014)

**1/3 supports partners**



# DWS revenue and expenditure history



# Oregon-specific resources and needs (2014 ASDWA national report)

- Current OR total equivalent FTEs (state, counties, partners, contractors) – 60
- OR does base program functions and some comprehensive program functions
- State-specific resource needs model supplied to each state
- OR results for 2014:
  - Base program need – 100
  - Comprehensive program need – 122
- **Oregon has about 50% of a comprehensive statewide program**

# Organizational performance level survey

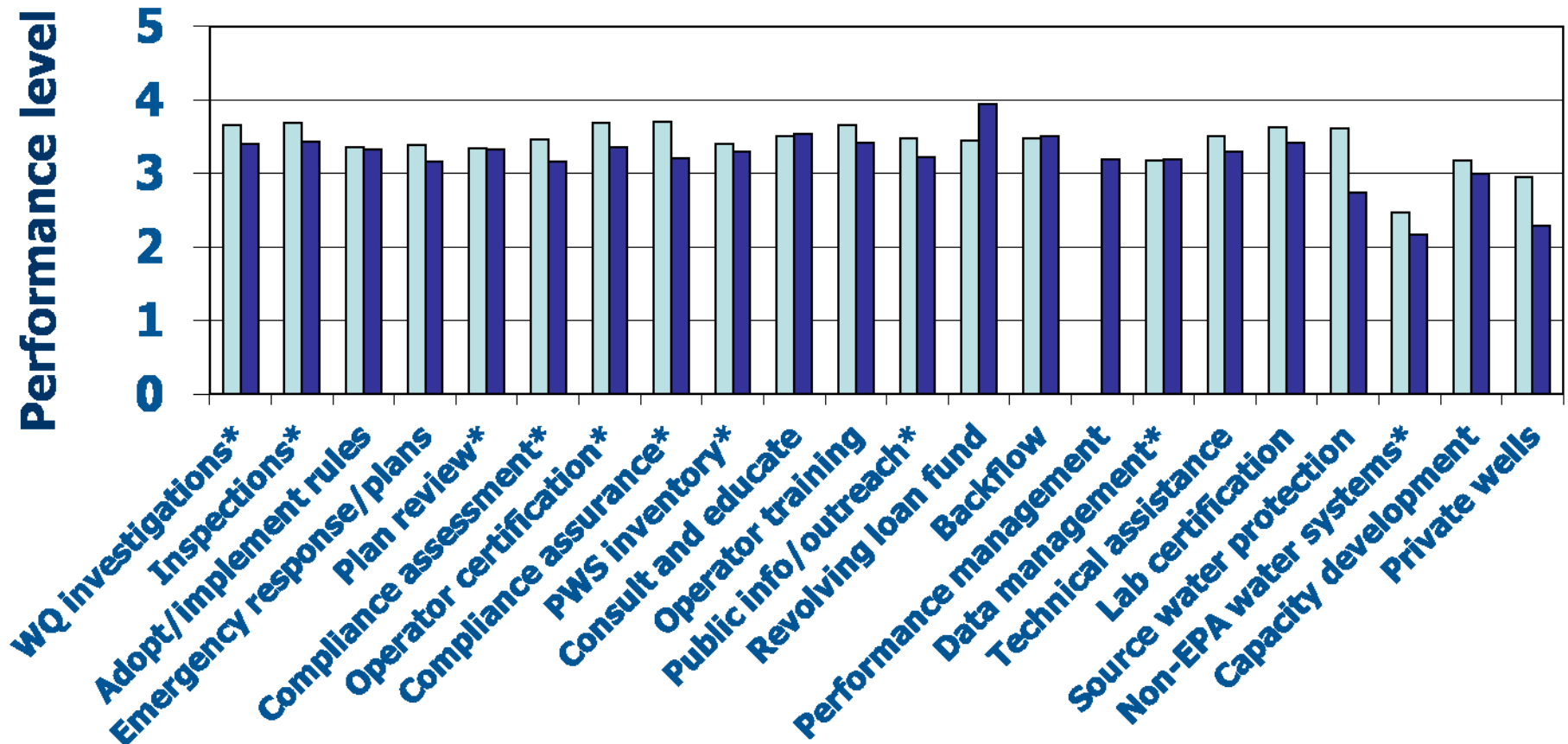
1. Reactive and variable outcomes; many problems, little standardized work
2. Awareness of need for more consistent outcomes; glitches occur frequently, sometimes serious
3. Consistent outcomes; some glitches occur; usually not serious
4. Outstanding outcomes; but not quite always automatic
5. Seamless; transparent; automatic excellent outcomes

# OHA/Co HD/ ODA performance level survey results

Feb 2015 – 40 responses, overall aver. 3.21

Feb 2011 – 72 responses, overall aver. 3.30

(Nov 2012 – 87 PWS responses, overall aver. 3.13)



**Essential functions – in priority order, high to low**

\* 30 or more responses in 2015



# 2015-17 PHD major budget issues (3/31/15 – Ways and Means)

- Dependency on federal funds to support core public health programs
- Dependency on medical marijuana fee support for core (but unrelated) public health programs, uncertainty of sustainability
- Loss of some federal funds in 2013-15
- Uncertainty of federal funds in 2015-17
- Changes in the health care delivery system
- **Redesign of fee-based revenue structures necessary based on current demands (Phase 2 presentation at later date)**

## Drinking Water Services Fees – (4/22/15, W&M Phase 2)

<b>Proposal</b>	<b>Raise fees for 4 essential DWS functions (ORS 448) 1) Certify water system operators 2) Certify backflow testers 3) Inspect water systems 4) Review water system construction plans</b>
<b>Rationale</b>	Maintains current staffing and service level for fee-supported work through 2017-19. Current fees now support less than half of needed FTE to fulfill responsibilities prescribed in statute ORS 448.131, 448.150, 448.279, and 448.450
<b>Last fee increase</b>	1) Certify water system operators - 2006 2) Certify backflow testers -1994, 2006 3) Inspect water systems - 2008 4) Review water system construction plans -2006
<b>Who is impacted</b>	Water system operators, backflow testers, water systems
<b>Risks of not moving forward</b>	Safety of public drinking water, reduced services, and increased wait times to businesses and individuals requiring licensure, inspection, or review
<b>Effective date</b>	By January 1, 2016



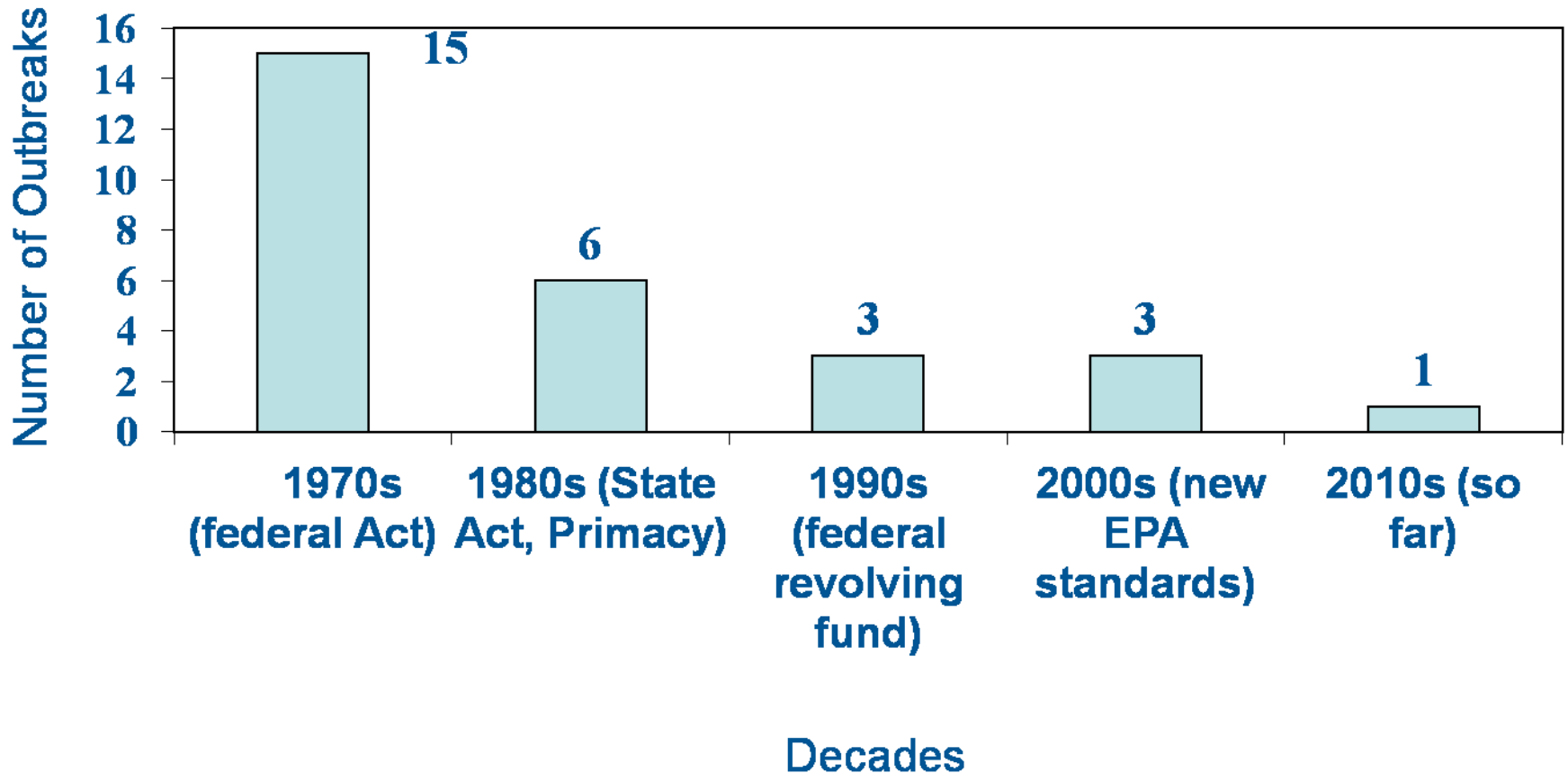
# Needed fee revenue

<b>Fee type</b>	<b>Work-load (FTE)</b>	<b>Current fee revenue (2013-15)</b>	<b>Fee revenue needed (2015-17) 18 months</b>	<b>Fee revenue needed (2017-19) 24 months</b>	<b>Percent revenue increase over current</b>
Operator certification	1.8	\$260,070	\$407,618	\$543,491	110%
Backflow tester and specialist certification	1.8	\$252,220	\$414,445	\$552,593	120%
Water system survey inspections	3.4	\$351,165	\$877,913	\$1,170,551	230%
Plan review	2.2	\$122,535	\$536,099	\$714,799	480%

# Measuring progress

## Oregon waterborne outbreaks

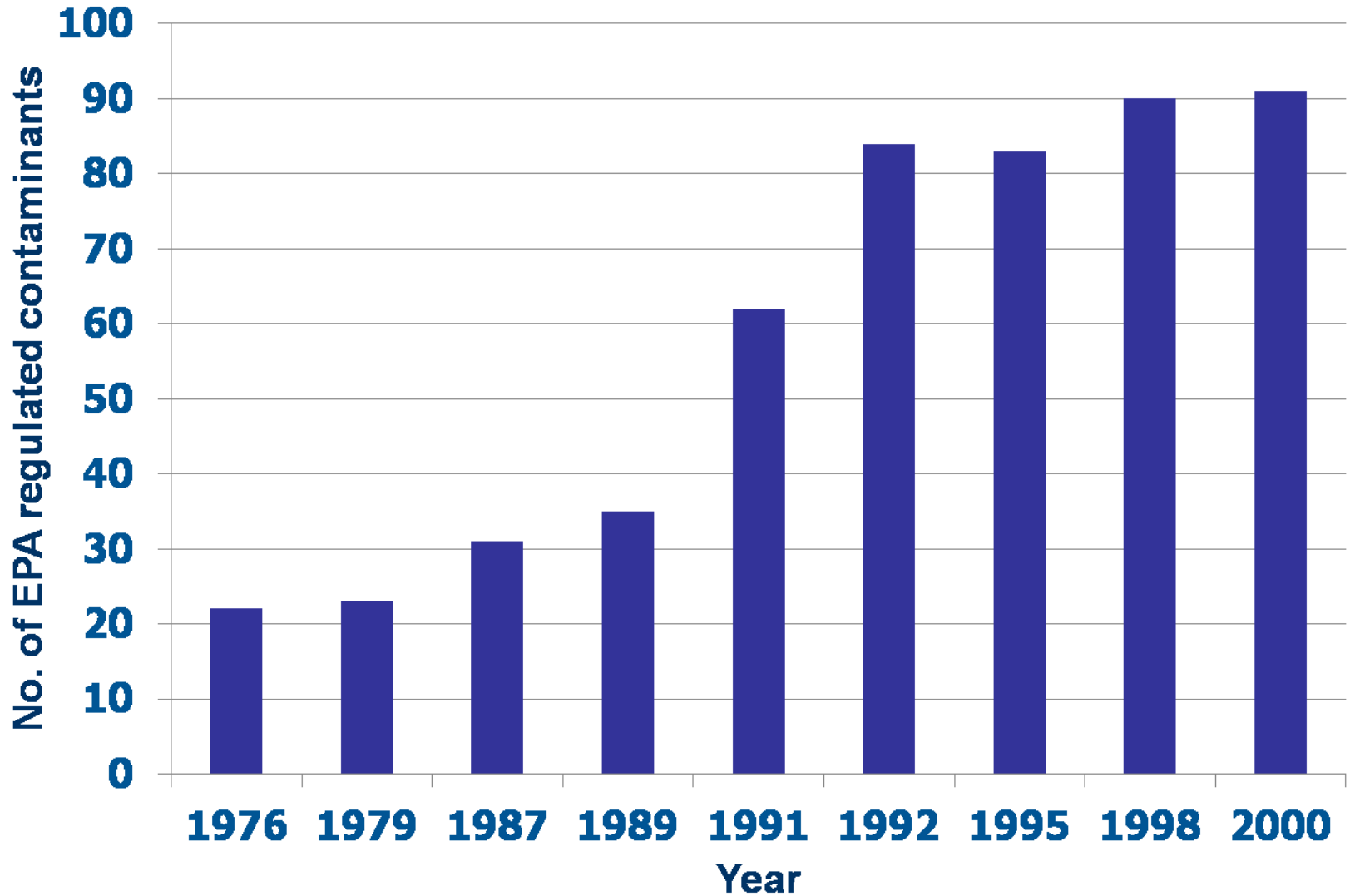
Total Cases, 28 Outbreaks-9,000 sickened (CDC)



# Baker City *cryptosporidiosis* outbreak Summer 2013



# Safe drinking water standards



Jim Boydston

EPA-570/9-76-003

# NATIONAL INTERIM PRIMARY DRINKING WATER REGULATIONS



ENVIRONMENTAL PROTECTION AGENCY  
OFFICE OF WATER SUPPLY

OREGON ADMINISTRATIVE RULES  
CHAPTER 333

# PUBLIC WATER SYSTEMS 1983



OFFICE OF ENVIRONMENT AND HEALTH SYSTEMS  
PORTLAND  
OREGON

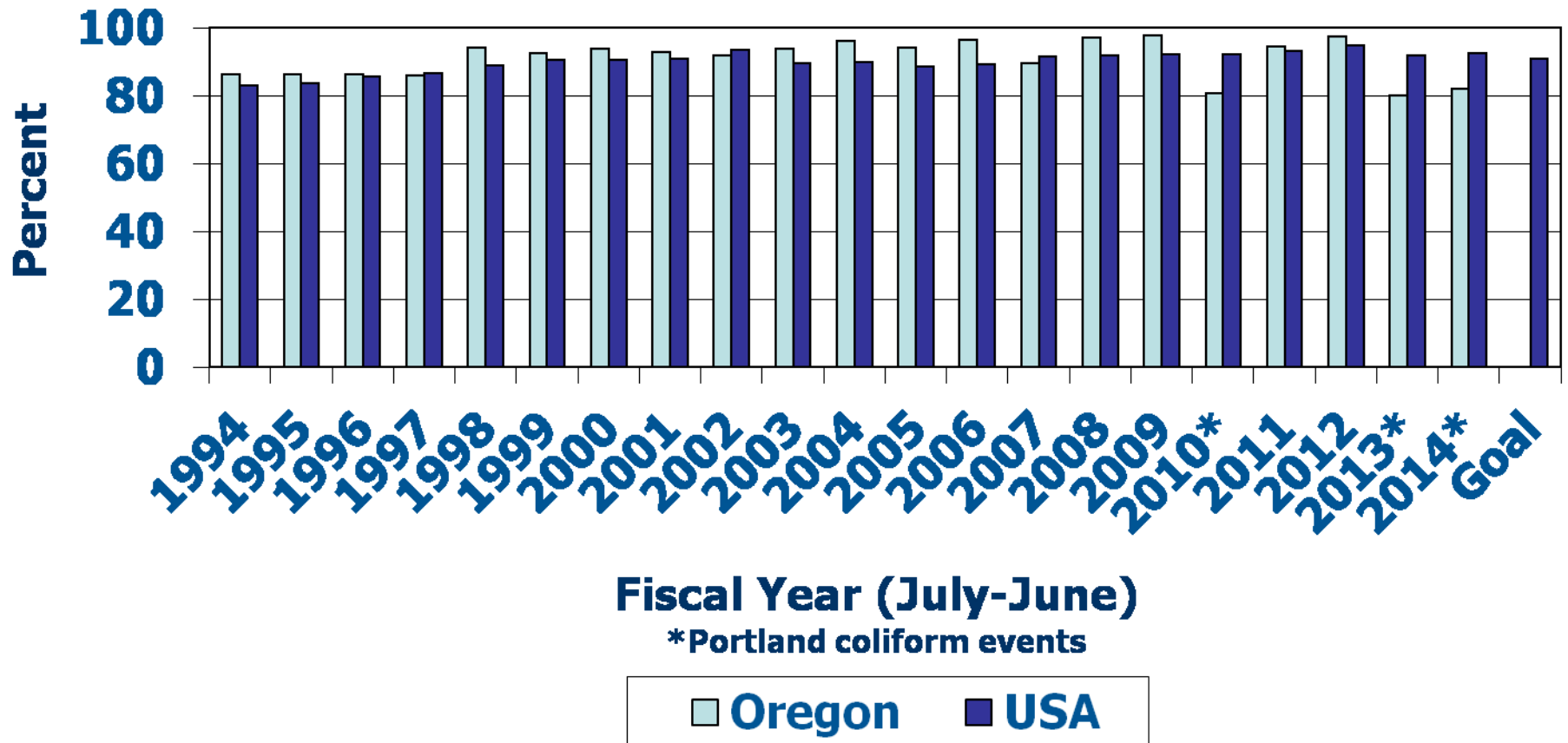
# Oregon accomplishments

- ORS 448, Oregon program restart, 1981
- Primacy since 1986
- **200 water systems using unfiltered surface water sources installed treatment, connected to others, drilled wells**
- 130 systems installed corrosion control treatment to reduce lead levels at the tap
- 50 systems took action to meet the arsenic MCL
- Other systems dealt with coliform bacteria, nitrate, DBPs, VOCs, SOCs...
- \$300M in revolving fund assistance to 150 communities since 1998!
- Oregon has adopted all current EPA rules, RTCR is next

# OR compliance trends

Large water systems consistently meet standards

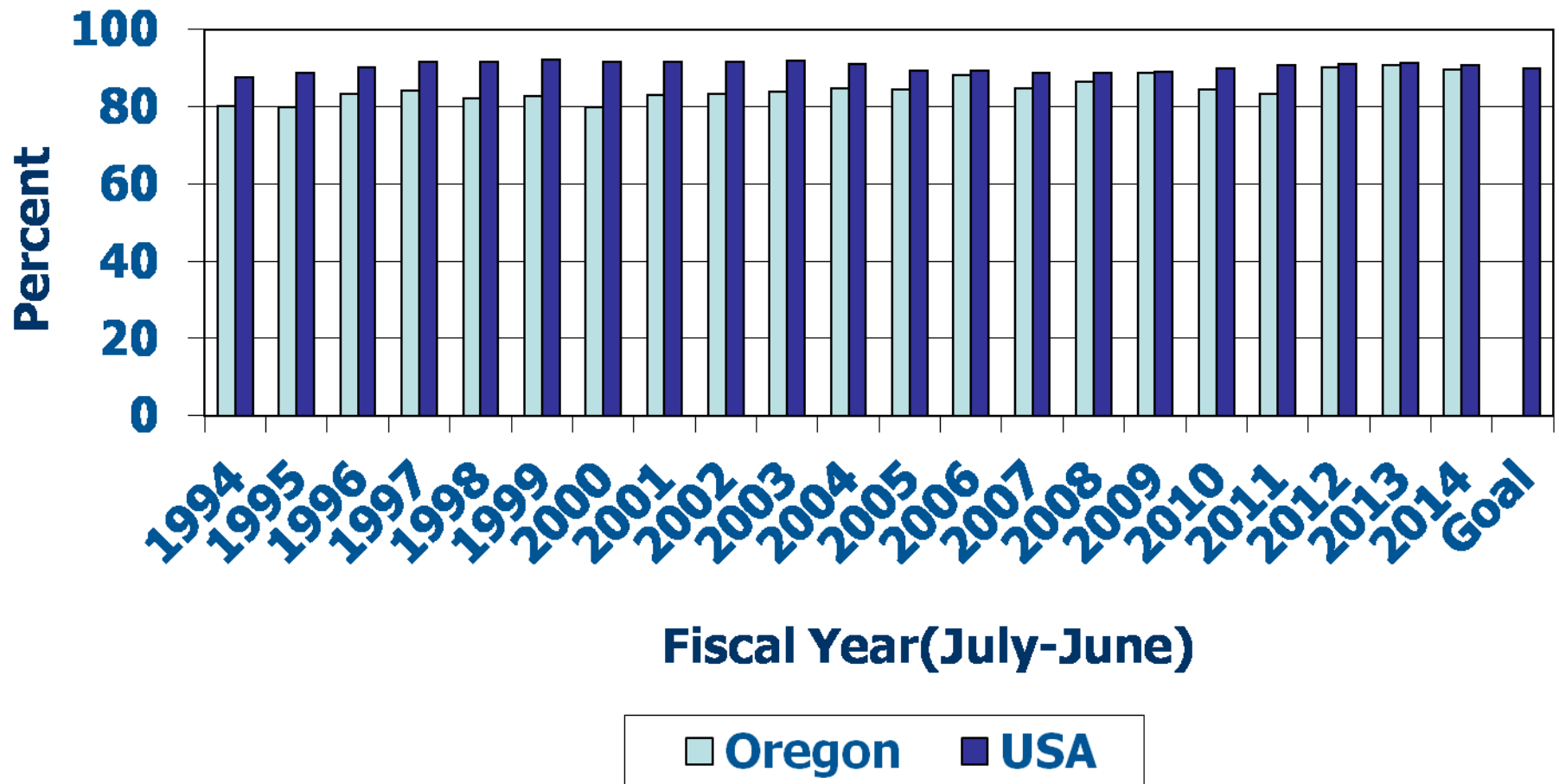
Measure #1-% of OR population served by community systems that meet health-based standards throughout the year



# OR compliance trends

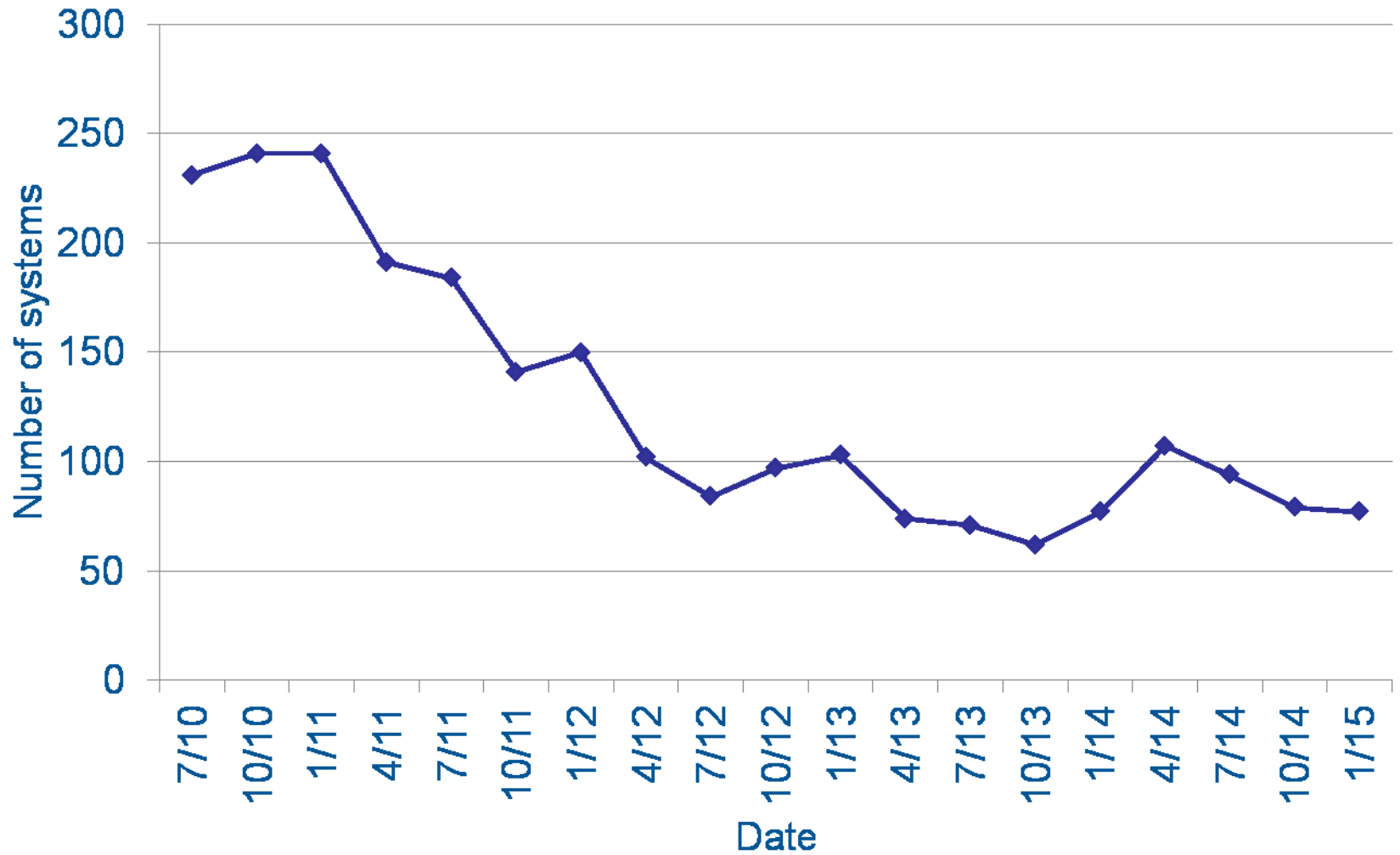
Small systems do not always meet standards

Measure #2-% of OR community systems that meet health-based standards throughout the year





# Oregon priority noncomplier water systems (>10 points)



# Modernizing the program

- State program:
  - ABC certification exams at H&R Block - now
  - Pay fees by credit card – survey inspection fees in 2015
  - E-PIPELINE newsletter posted on line with email subscription/notification – 2015
  - E-water system survey forms – 2015
  - File imaging and records management – date TBD
- EPA program:
  - E-reporting of all compliance data and monthly reports via Compliance Monitoring Data Portal – 2016
  - New national SDWA database system (SDWIS Prime) – date TBD



Questions?

Oregon  
Health  
Authority

Public Health  
Division  
May 2015